

# Running R2 under Windows 7

R2 is “legacy” software, written to run on MSDOS computers in 1992. It implemented a “Windows-like” interface before Windows was in wide use.

For versions of Windows up to Windows XP SP3, R2 could be run in a “DOS box” as described in the original documentation. To run R2 under Windows 7, one must implement a DOS box using the freely available software “DOSBox,” available for download at <http://www.dosbox.com>.

In order to run R2 under Windows 7, execute the following steps.

1. Create a directory to hold the R2 files. In our example, this directory is C:\R2.
2. Download the R2.zip file from <http://www.statpower.net/Software.html> and unzip all files into the C:\R2 directory.
3. Go to [www.dosbox.com](http://www.dosbox.com). Download DOSbox for Windows. When these instructions were written, this could be accomplished in two steps.
4. At [www.dosbox.com](http://www.dosbox.com), click on the “downloads” link



5. This will take you to a downloads page. Click on the “Windows” link

News Crew Information Status FAQ Downloads Compatibility Forum Links Login Latest version: **0.74**

Click here to download **DOSBox 0.74** for your Operating System, or to support us with a donation:

[Download Now](#) sourceforge - Trusted For Open Source [Make A Donation](#)

[DOSBox tutorial](#)

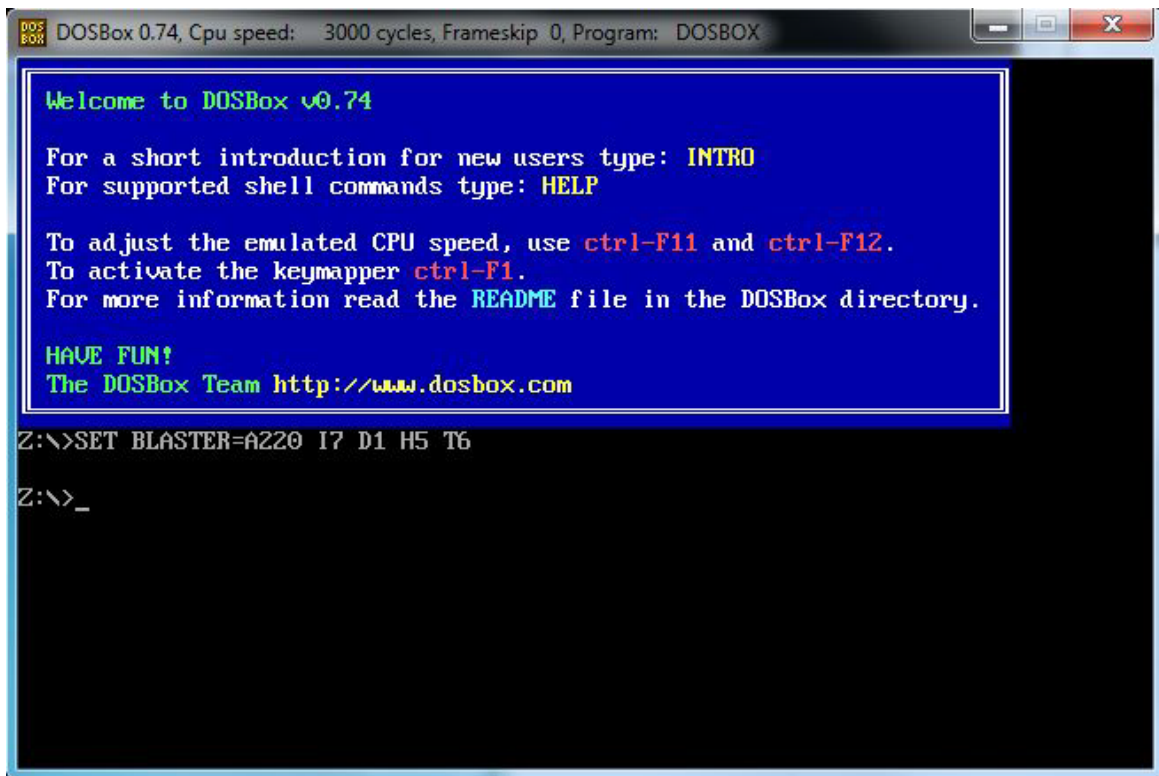
[DOSBox and Vista](#)

Looking for a different version, a frontend or a translation? Here's a full list of files:

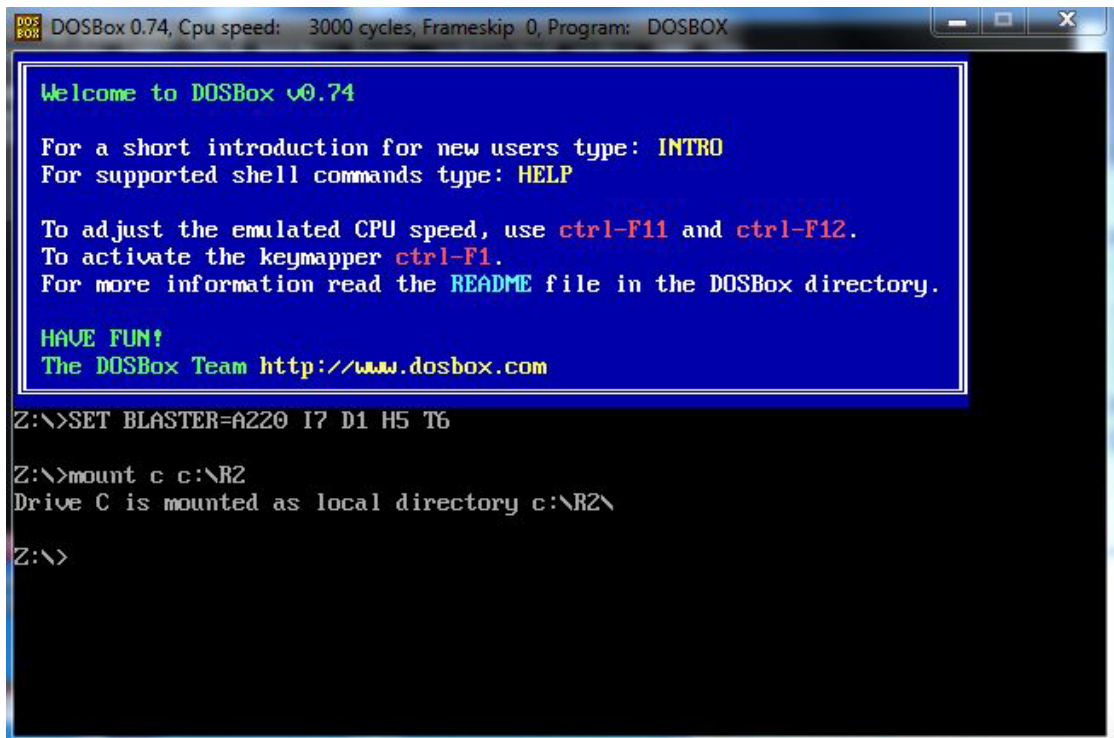
DOSBox (specific versions)		
<a href="#">Windows</a>	0.74	Win32 installer
<a href="#">FreeBSD package</a>	0.74	TBZ
<a href="#">Fedora</a>	0.74	rpm
<a href="#">Gentoo Linux</a>	0.74	portage
<a href="#">Source</a>	0.74	Source

Looking for classic PC games?  
Get them at [GOG.COM](#).  
Cheap and DRM-free!

6. The DOSbox installation file will download to your computer. Run it to install dosbox. Ignore any warning message about the file not being signed.
7. Start up DOSbox by double-clicking on the icon placed on your desktop.
8. You should see a window like this:



9. You now need to “mount” your previously established R2 working directory as a “drive” within DOSbox. Simply enter the command “mount c c:\R2” and press Return. DOSbox will respond as shown.



```
DOSBox 0.74, Cpu speed: 3000 cycles, Frameskip 0, Program: DOSBOX

Welcome to DOSBox v0.74

For a short introduction for new users type: INTRO
For supported shell commands type: HELP

To adjust the emulated CPU speed, use ctrl-F11 and ctrl-F12.
To activate the keymapper ctrl-F1.
For more information read the README file in the DOSBox directory.

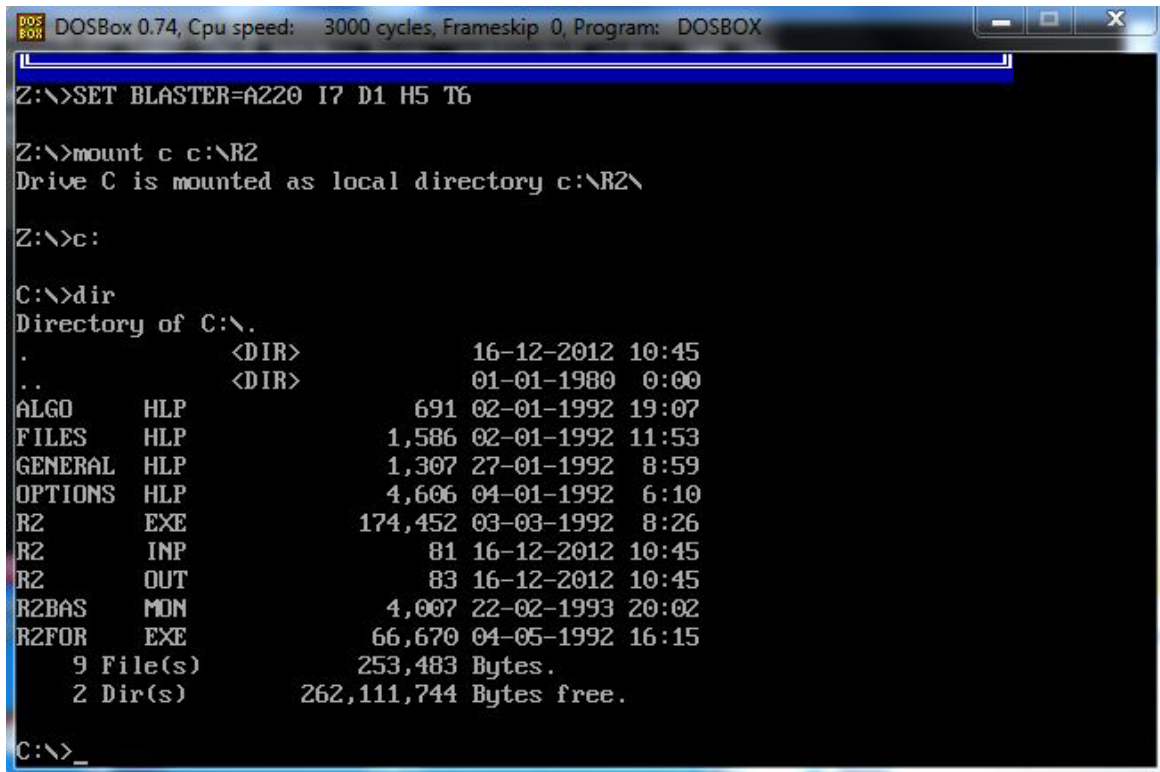
HAVE FUN!
The DOSBox Team http://www.dosbox.com

Z:\>SET BLASTER=A220 I7 D1 H5 T6

Z:\>mount c c:\R2
Drive C is mounted as local directory c:\R2\

Z:\>
```

10. This command has created and mounted a “virtual C drive” with the contents of your working R2 directory c:\R2. Change to this drive by typing “c:” followed by the Enter key, then type “dir” followed by the Enter key to check the contents. You should see the following:



```
DOSBox 0.74, Cpu speed: 3000 cycles, Frameskip 0, Program: DOSBOX
Z:\>SET BLASTER=A220 I7 D1 H5 T6

Z:\>mount c c:\R2
Drive C is mounted as local directory c:\R2\

Z:\>c:

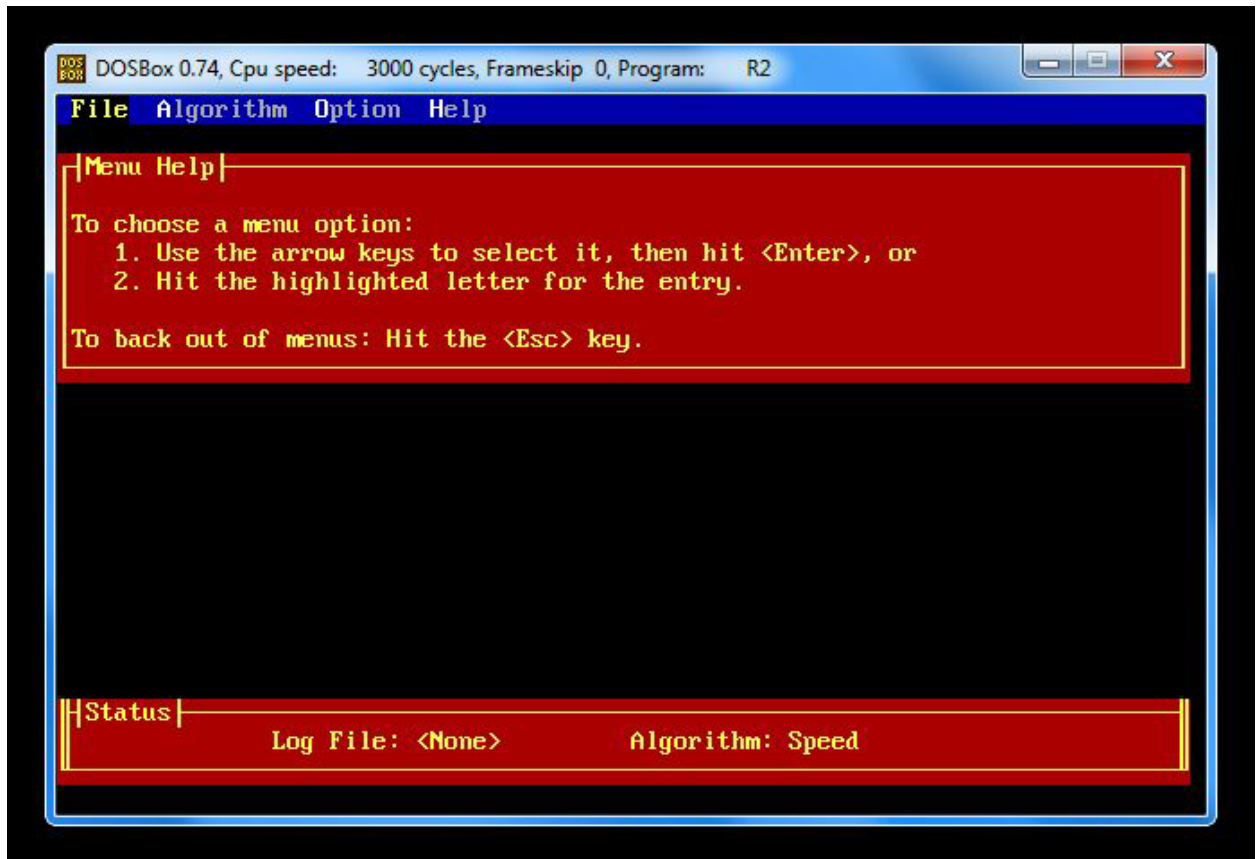
C:\>dir
Directory of C:\.
.                <DIR>                16-12-2012 10:45
..               <DIR>                01-01-1980  0:00
ALGO            HLP                  691 02-01-1992 19:07
FILES           HLP                  1,586 02-01-1992 11:53
GENERAL         HLP                  1,307 27-01-1992  8:59
OPTIONS         HLP                  4,606 04-01-1992  6:10
R2              EXE                  174,452 03-03-1992  8:26
R2              INP                   81 16-12-2012 10:45
R2              OUT                   83 16-12-2012 10:45
R2BAS           MDN                   4,007 22-02-1993 20:02
R2FOR           EXE                  66,670 04-05-1992 16:15
 9 File(s)      253,483 Bytes.
 2 Dir(s)       262,111,744 Bytes free.

C:\>_
```

11. You are now ready to go. Type “R2” followed by Enter, and the program should come up and running as follows:



12. Hit any key, and you should see the following:



13. Consult the Program Documentation in the file R2 Manual.pdf for instructions on how to proceed.